



LIGHT RELATED PARTS

**CROSS CUB 110 (JA60)
 SPECIFIC COUPLER HARNESS INCLUDED!**

**2-LIGHT STYLE
 LED SHUTTLE BEAM KIT RELEASED!**



NO HARNESS MODIFICATION REQUIRED!

LED SHUTTLE BEAM KIT

APPLICATION

CROSS CUB 110 (JA60)

NOTES

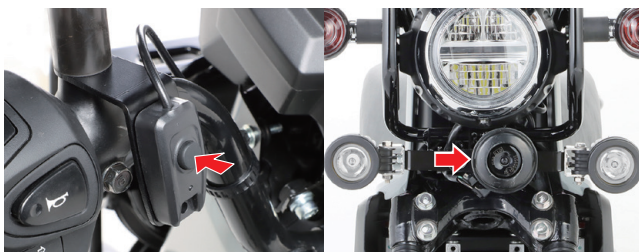
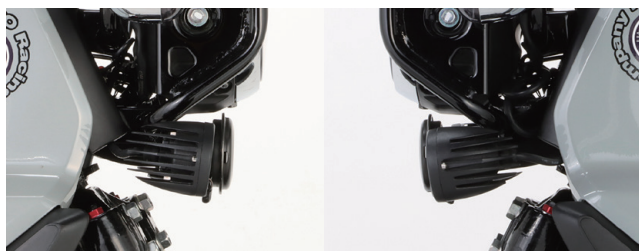
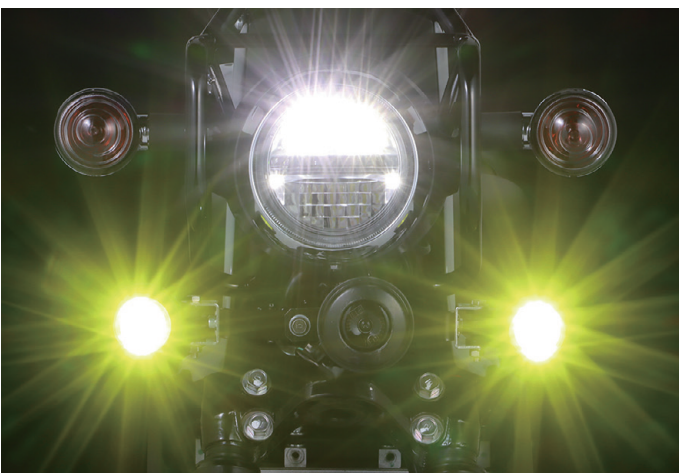
- BOLT-ON ● LED SHUTTLE BEAM × 2 ● STAY : STEEL WITH BLACK FINISH
- INSTALLES UNDER HEAD LIGHT STAY ● POWER EXTRACT HARNESS, WASHER, BOLT, NUT INCL. ● POWER ON / OFF SWITCH INCL.
- CABLE TIES INCL. ※ KITACO **NEW** FRONT EMBLEM KIT (Vol.12-2) USABLE

TYPE	CODE	PRICE	JAN CODE
LIME YELLOW	800-1456030	¥ 15,500	4 990852 129263
CLEAR	800-1456080	¥ 15,000	4 990852 129270

※ Unit becomes very hot while it is on /after turning off, so please be careful not to burn yourself.
 ※ If installed together with high-power devices such as grip heaters, total power consumption may exceed the vehicle's power capacity.



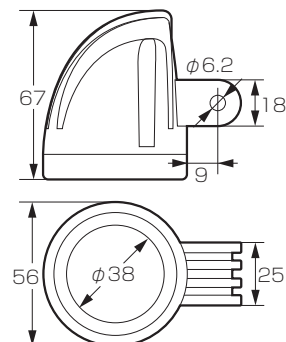
Two-lamp high-brightness LED shuttle beam kit includes specific stay and harness. Helps to improve dress-up and as supported lamp for nighttime driving.



Push-button Power ON/OFF switch

For LED shuttle beam installation, mounted the horn facing left.

● LED Shuttle Beam Specifications



SIZE : mm